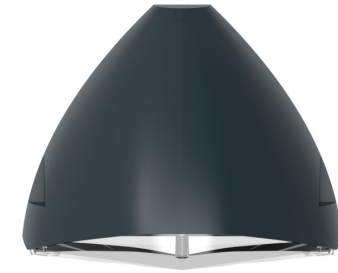
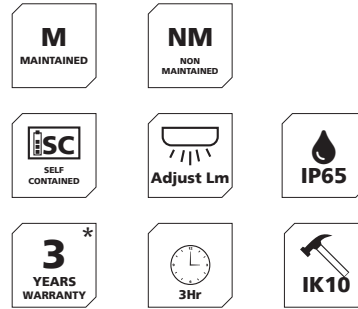
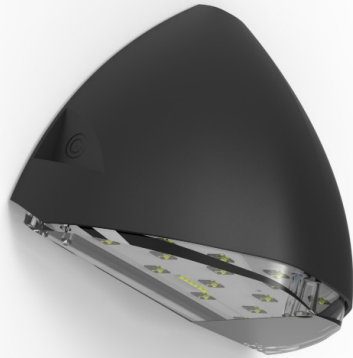


IP65 Wall Light X-SK3M

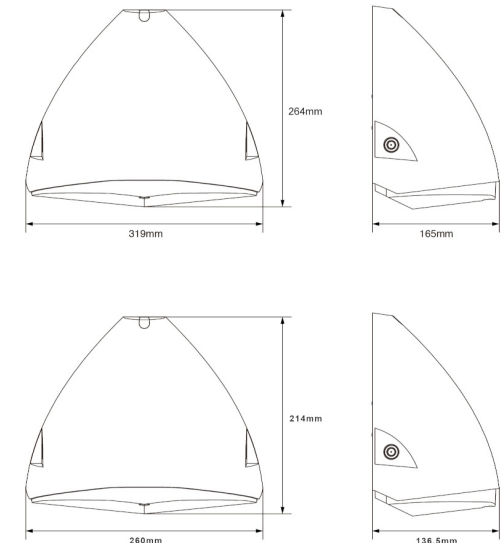


Enjoy the flexibility of this Outdoor Wall Light's adjustable CCT and wattage. Choose between a warm (3000K) or cool (4000K) light, and adjust the brightness to suit your specific needs. This versatility ensures optimal lighting for any outdoor space.

- ✓ IP65
- ✓ IK10
- ✓ Adjust wattage / Lumen
- ✓ Adjust Colour temperature
- ✓ Different sizes available
- ✓ Large 12W to 28W | Mid 7W to 10W
- ✓ Emergency Lumens
- ✓ Suitable for rear and side cable entry

X-SK3 Options	
M	3 Hour Non-Maintained
/230	Mains only
/L	Larger size
/M	Mid size
/B	Black
/A	Anthracite

X-SK3M Spec	Mid Size	Large Size
Input Voltage	220-240V AC	
Total Wattage	8W, 10W, 12W	12W, 13W, 18W, 28W
Function	Switchable Maintained	
Lumens Per/Watt	>117lm/W	>120lm/W
CCT / CRI / SDCM	3000K / 4000K / CRI80 / SDCM<6	
Power Factor	>0.9	
Inrush Current	9A / 173µs	10A for 100µs
Emergency Duration	3 Hours	
Emergency Lumens	100lm	275lm
Battery	LiFePO4 3.2V 1.5Ah	LiFePO4 6.4V 1.5Ah
Finish (RAL)	RAL7016 / RAL9002	
Class / IP / IK	Class I / IP65 / IK10	
Beam Angle	102°	120°
Glow Wire Testing (TP rating)	850° C	
Temperature	0~40° C	
Dimensions	260 x 214 x 136.5mm	319 x 264 x 165mm



* Limited warranty, enquire for full details

Ringtail Lighting maintains a policy of continuous development and reserves the right to change the details shown on this data sheet without notice. The contents are intended for guidance only

www.ringtail.co.uk



FM 582596